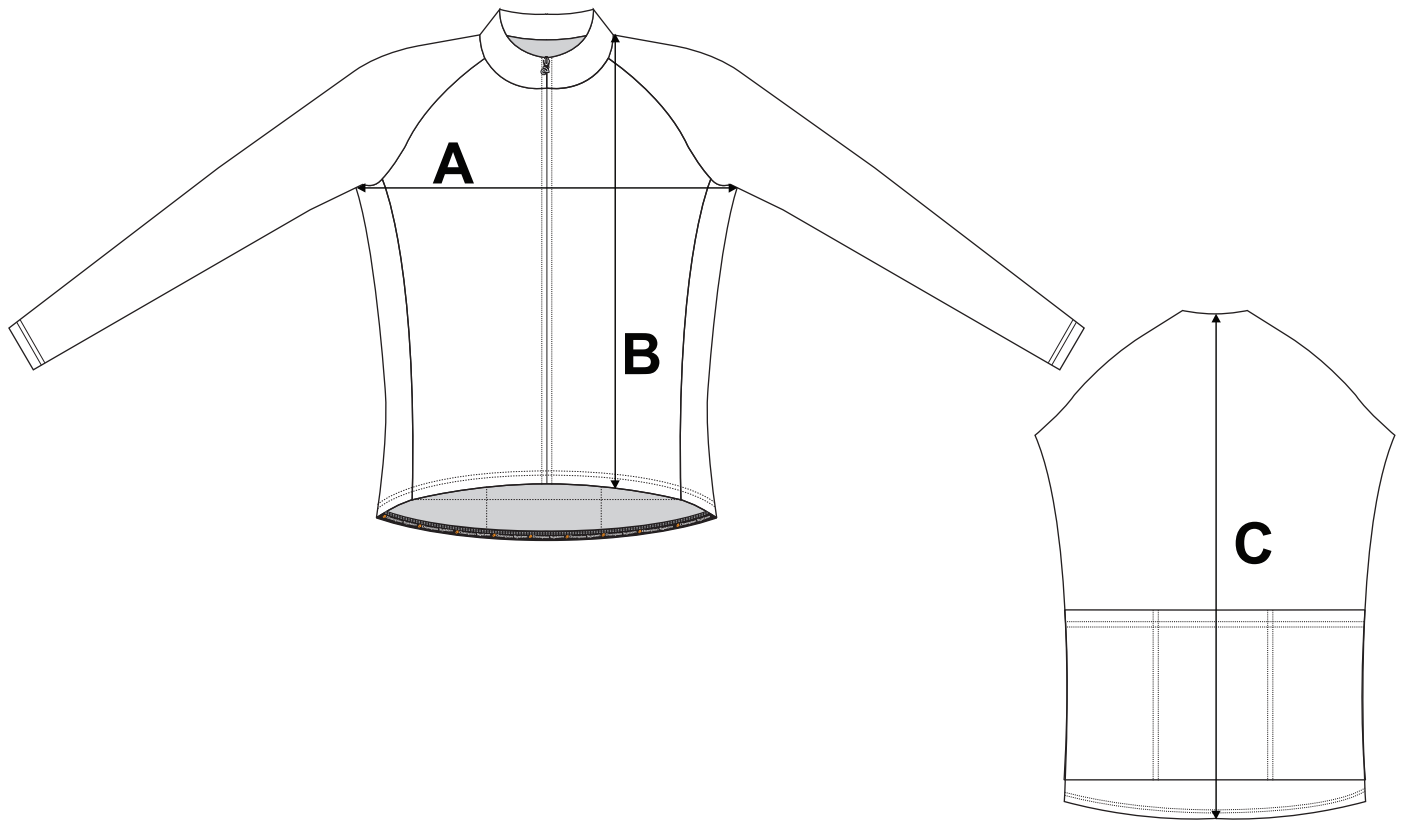


If you're unsure which size to buy, try measuring a tech fleece jacket that you already own that fits you well, and compare those measurements to the size chart. Lay the tech fleece jacket on a flat surface and use the above guide to measure the tech fleece jacket.

**Note: All measurements are approximate.**

<b>Size</b>	<b>A (Chest)</b>	<b>B (Front Length)</b>	<b>C (Back Length)</b>
<b>XS</b>	<b>17 3/4"</b>	<b>21"</b>	<b>25 1/2"</b>
<b>S</b>	<b>18 3/4"</b>	<b>21 5/8"</b>	<b>26 1/4"</b>
<b>M</b>	<b>19 3/4"</b>	<b>22 1/4"</b>	<b>27"</b>
<b>L</b>	<b>20 3/4"</b>	<b>22 7/8"</b>	<b>27 3/4"</b>
<b>XL</b>	<b>21 3/4"</b>	<b>23 1/2"</b>	<b>28 1/2"</b>
<b>2XL</b>	<b>22 3/4"</b>	<b>24 1/8"</b>	<b>29 1/4"</b>
<b>3XL</b>	<b>23 3/4"</b>	<b>24 3/4"</b>	<b>30"</b>
<b>4XL</b>	<b>24 3/4"</b>	<b>25 3/8"</b>	<b>30 3/4"</b>



If you're unsure which size to buy, try measuring a tech fleece jacket that you already own that fits you well, and compare those measurements to the size chart. Lay the tech fleece jacket on a flat surface and use the above guide to measure the tech fleece jacket.

**Note: All measurements are approximate.**

<b>Size</b>	<b>A (Chest)</b>	<b>B (Front Length)</b>	<b>C (Back Length)</b>
<b>XS</b>	<b>16 3/4"</b>	<b>20 3/8"</b>	<b>24 3/4"</b>
<b>S</b>	<b>17 3/4"</b>	<b>21"</b>	<b>25 1/2"</b>
<b>M</b>	<b>18 3/4"</b>	<b>21 5/8"</b>	<b>26 1/4"</b>
<b>L</b>	<b>19 3/4"</b>	<b>22 1/4"</b>	<b>27"</b>
<b>XL</b>	<b>20 3/4"</b>	<b>22 7/8"</b>	<b>27 3/4"</b>
<b>2XL</b>	<b>21 3/4"</b>	<b>23 1/2"</b>	<b>28 1/2"</b>
<b>3XL</b>	<b>22 3/4"</b>	<b>24 1/8"</b>	<b>29 1/4"</b>
<b>4XL</b>	<b>23 3/4"</b>	<b>24 3/4"</b>	<b>30"</b>