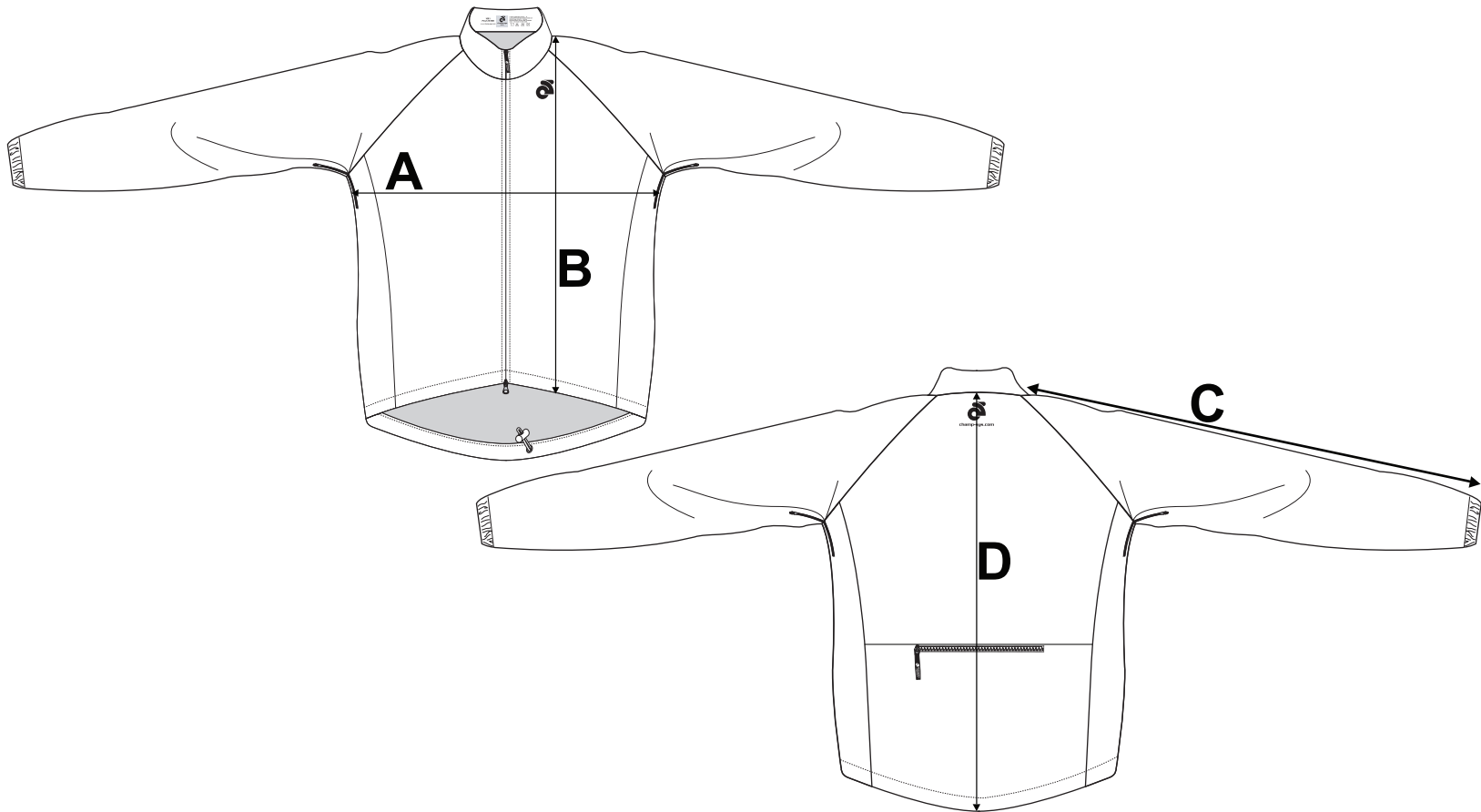


If you're unsure which size to buy, try measuring a Wind Jacket that you already own that fits you well, and compare those measurements to the size chart. Lay the Wind Jacket on a flat surface and use the above guide to measure the Wind Jacket.

Note: All measurements are approximate.

Size	A (Chest)	B (Front Length)	C (L/S Length)	D (Back Length)
XS	21 1/2"	24"	31 3/4"	27 3/4"
S	22 1/2"	24 3/4"	32 3/8"	28 3/8"
M	23 1/2"	25 1/2"	33"	29"
L	24 1/2 "	26 1/4"	33 5/8"	29 5/8"
XL	25 1/2"	27"	34 1/4"	30 1/4"
2XL	26 1/2"	27 3/4"	34 7/8"	30 7/8"
3XL	28"	28 1/2"	35 1/2"	31 1/2"
4XL	29 1/2"	29 1/4"	36 1/8"	32 1/8"



If you're unsure which size to buy, try measuring a Wind Jacket that you already own that fits you well, and compare those measurements to the size chart. Lay the Wind Jacket on a flat surface and use the above guide to measure the Wind Jacket.

Note: All measurements are approximate.

Size	A (Chest)	B (Front Length)	C (L/S Length)	D (Back Length)
XS	20 1/2"	23 1/4"	31 1/8"	26 3/4"
S	21 1/2"	24"	31 3/4"	27 1/2"
M	22 1/2"	24 3/4"	32 3/8"	28 1/4"
L	23 1/2"	25 1/2"	33"	29"
XL	24 1/2"	26 1/4"	33 5/8"	29 3/4"
2XL	25 1/2"	27"	34 1/4"	30 1/2"
3XL	26 1/2"	27 3/4"	34 7/8"	31 1/4"
4XL	27 1/2"	28 1/2"	35 1/2"	32"